

RECEIVED
LARAMIE COUNTY
CHEYENNE, WY.

CERTIFIED LAND CORNER RECORDATION

90 NOV 30 AM 11 57

DESCRIPTION OF CORNER EVIDENCE FOUND, AND ORIGINAL RECORD (if known)

No evidence of corner found.

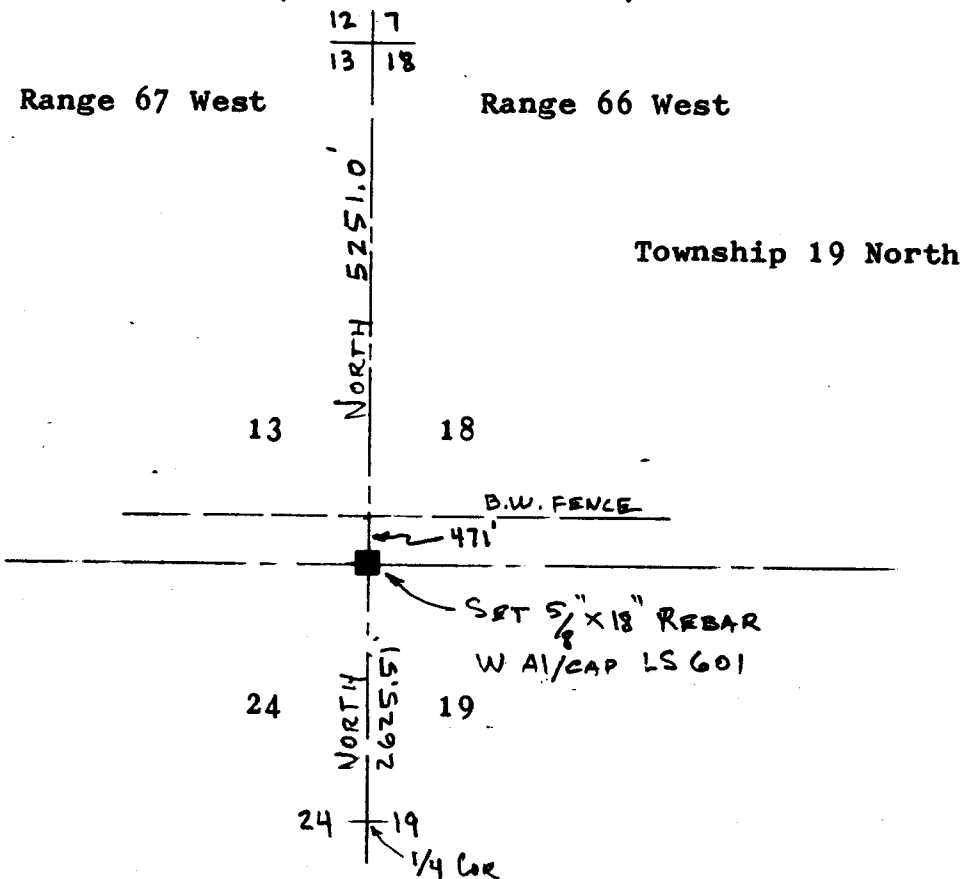
Original record - Set sandstone 22x11x3"

DESCRIPTION OF MONUMENT AND ACCESSORIES ESTABLISHED TO PERPETUATE THE ORIGINAL LOCATION OF THIS CORNER:

Set 5/8"x18" rebar with aluminum cap stamped + LS 601
built mound of rocks around corner. 24 19

Corner was considered lost so re-established by single proportion on N-S range line between corner to Sections 12, 7, 13 and 18 and Quarter corner between Sections 24 and 19.

SKETCH, WITH COURSE AND DISTANCE TO ADJACENT CORNER IF DETERMINED IN THIS SURVEY. (May Sketch or Paste Reproduction on Reverse Side.)



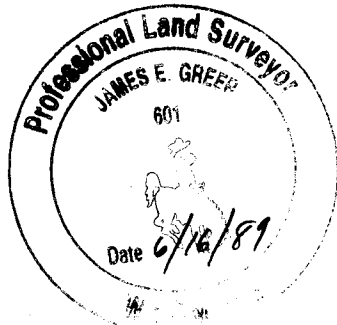
I, James E. Greer certify that I have carefully performed or reviewed the work done on the diagrammed corner as reported on this recordation form and approve the same.

James E. Greer
Signature of Surveyor

LS 601
Registration No.

STATE OF WYOMING,
Office of Clerk and Recorder,
County of Laramie

This "corner record" was filed for record on the _____ day of _____, 19____, was noted on the cross-index plat and is assigned page No. _____, in book No. _____.



Jack C. Whitehead
County Official

Cross Index No.	N-25	T.	19N	R.	67W	Mer.	6th
	N-1	T.	19N	R.	66W	Mer.	6th
		T.		R.		Mer.	
		T.		R.		Mer.	
		T.		R.		Mer.	
		T.		R.		Mer.	
		T.		R.		Mer.	